

# 20/01613/FUL

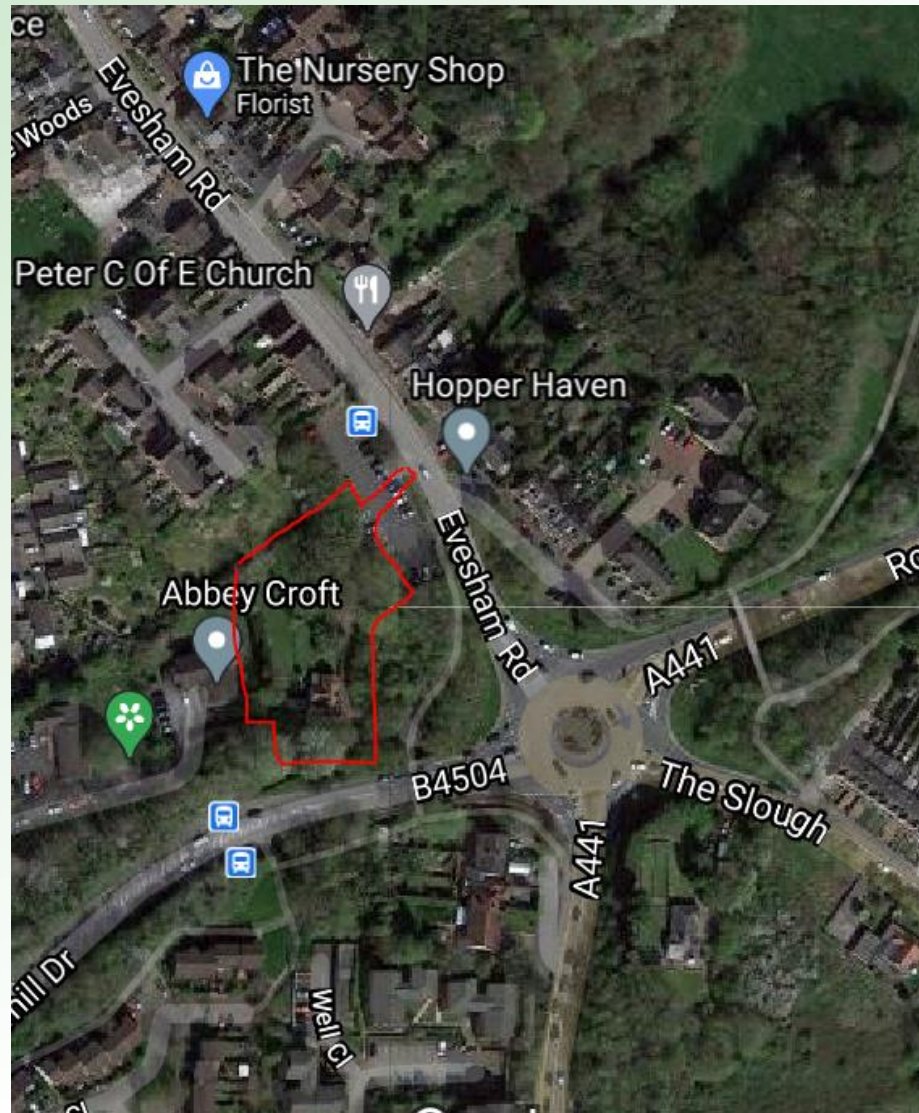
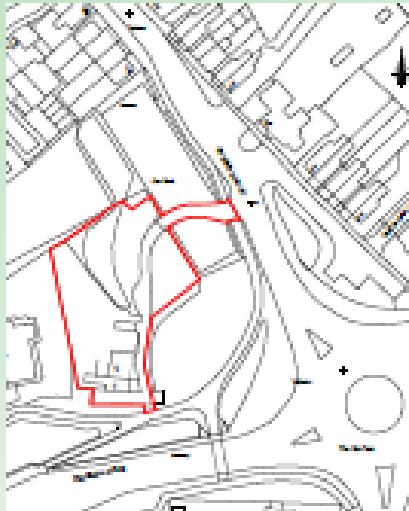
Land To The North Of 12 Crabbs Cross  
Lane, Redditch, Worcestershire

Erection of 3 two storey dwellings.

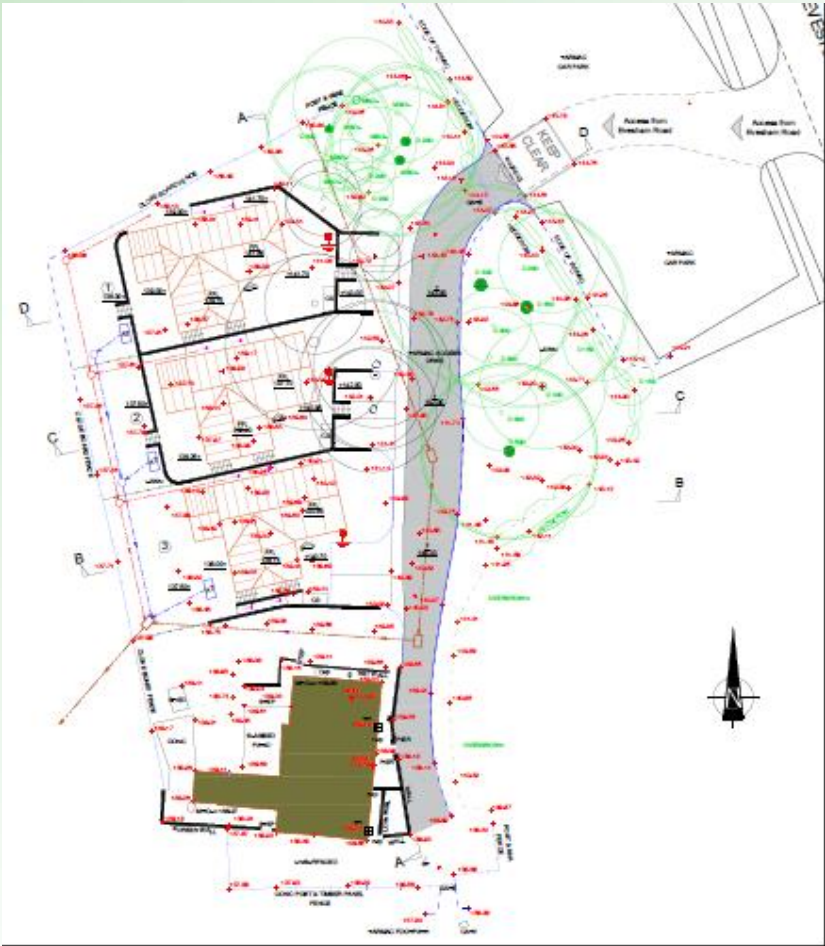
Recommendation: Granted



# Location Plan and Aerial View



# Proposed Site Plan



REDDITCH BOROUGH COUNCIL



*making  
a  
difference*

[www.redditchbc.gov.uk](http://www.redditchbc.gov.uk)

# Plot 1



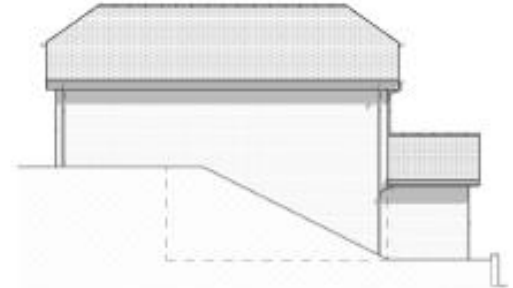
FRONT ELEVATION (East)



SIDE ELEVATION (South)



REAR ELEVATION (West)



SIDE ELEVATION (North)



LOWER GROUND FLOOR PLAN



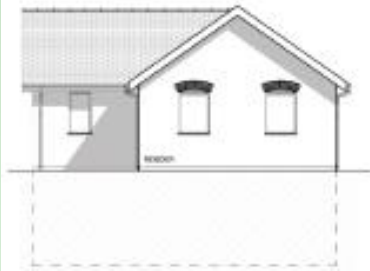
GROUND FLOOR PLAN

REDDITCH BOROUGH COUNCIL

making  
a  
difference

[www.redditchbc.gov.uk](http://www.redditchbc.gov.uk)

# Plot 2



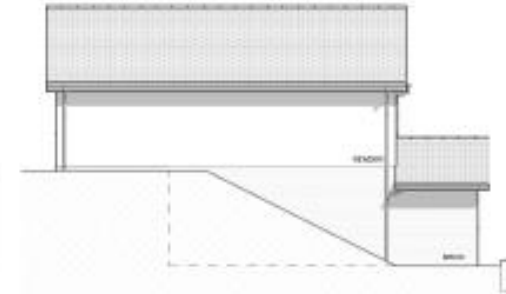
FRONT ELEVATION (East)



SIDE ELEVATION (South)



REAR ELEVATION (West)



SIDE ELEVATION (North)



LOWER GROUND FLOOR PLAN



GROUND FLOOR PLAN



REDDITCH BOROUGH COUNCIL

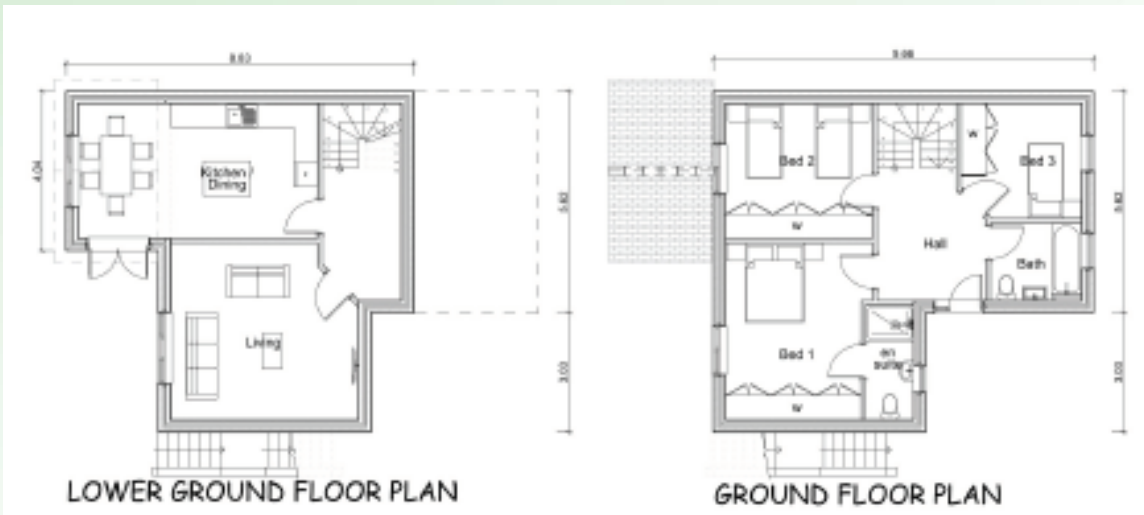


*making  
a  
difference*

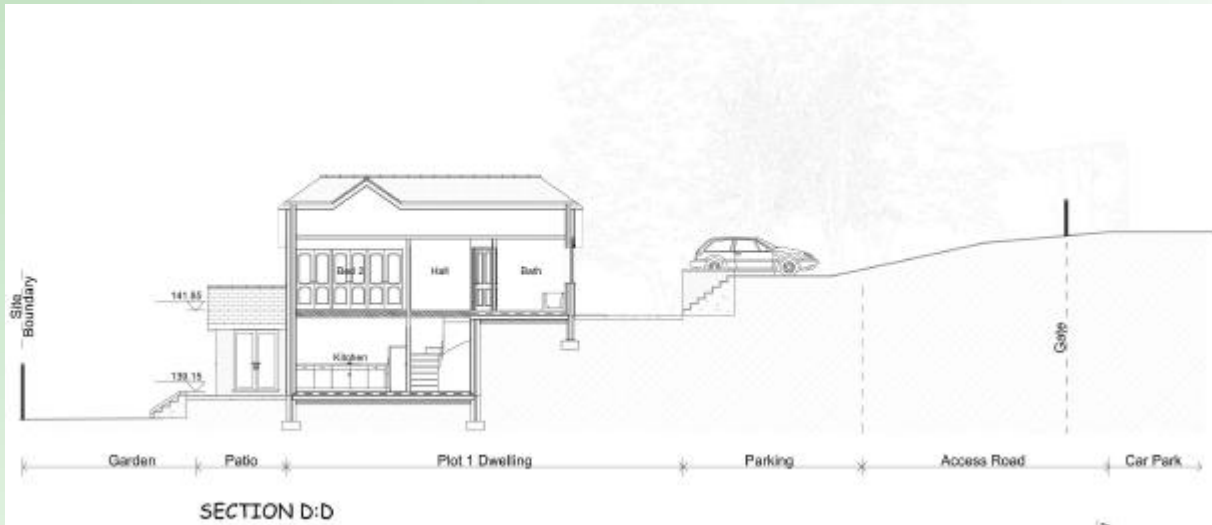
[www.redditchbc.gov.uk](http://www.redditchbc.gov.uk)



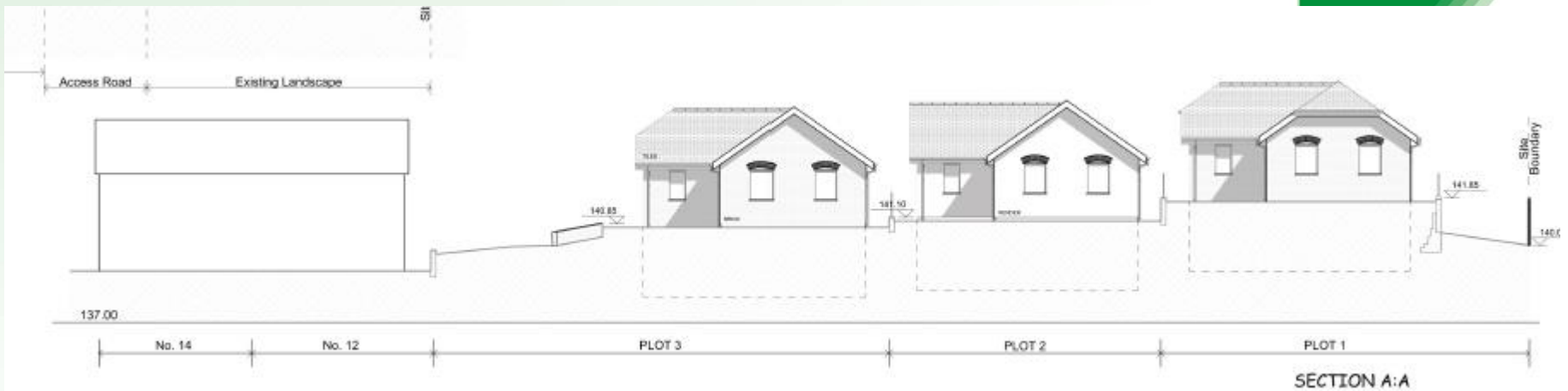
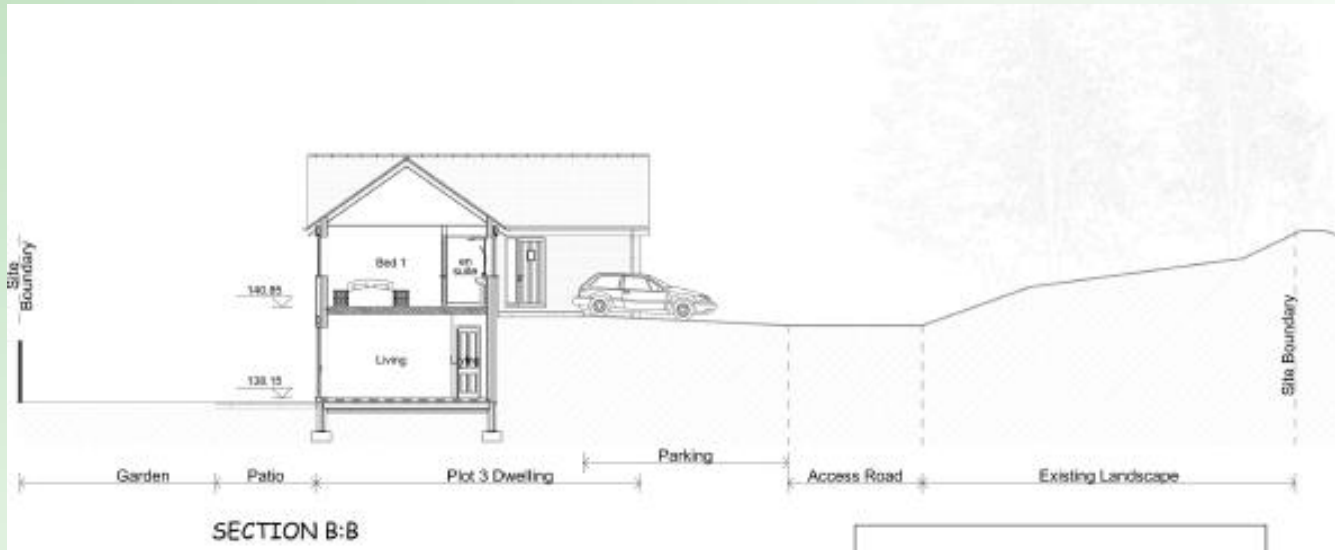
# Plot 3



# Cross Sections



# Cross Sections





# Site Photos



REDDITCH BOROUGH COUNCIL



*making  
a  
difference*

[www.redditchbc.gov.uk](http://www.redditchbc.gov.uk)

# Site Photos





# Site access



**DITCH** BOROUGH COUNCIL



making  
a  
difference

[www.redditchbc.gov.uk](http://www.redditchbc.gov.uk)